

# Biolog for Impactful Insights

Get the functional cellular data you need faster.

# The World's Best Solutions for Functional Insights

---

With a growing suite of proven technologies only Biolog has the tools, services, and support to provide the microbial phenotypic characterization and identification capabilities required to produce functionally relevant, repeatable, and actionable insights.

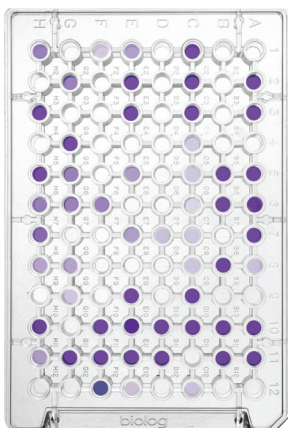




---

## EXPERIENCE FOR EVERY ASK

As industry leaders with the most extensive compound library and microbial organism database, we leverage our unrivaled working knowledge of metabolic pathways and best-in-class laboratory services to identify and phenotypically characterize almost anything – even the weird stuff.

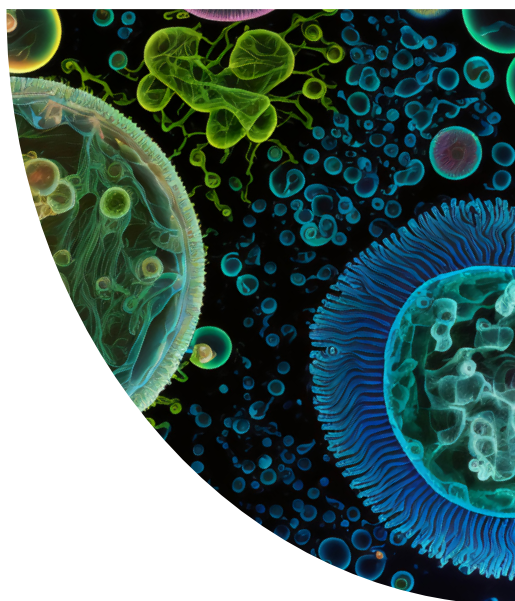


---

## COMMITTED TO DEVELOPMENT

The world is only beginning to scratch the surface of what is possible through functional phenotyping and polyphasic analysis. We are dedicated to supporting anyone ready to make the leap.

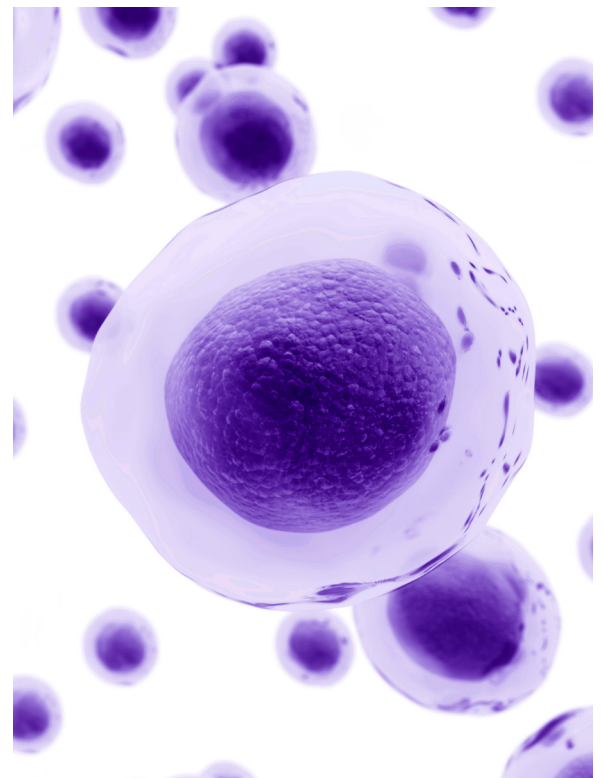
The applicability of our instrumentation, assays, and laboratory services grows broader every day.







Whether you are making quantum leaps in synthetic biology or breaking ground in sustainable agriculture, Biolog has the solutions to boost the efficacy of your work.





# Surge Ahead in Any Sector

---

Biolog instruments and laboratory services provide better and faster environmental monitoring in your quality control routine. We can help you keep unplanned production delays at bay with a database of over 7,000 common contaminants and a 3-day standard turnaround.

Working in drug discovery, gene editing or research and require quick answers? Biolog delivers the speed and accuracy you need to finish first.

---

ENVIRONMENTAL MONITORING

---

DRUG DISCOVERY AND DIAGNOSTICS

---

BASIC RESEARCH

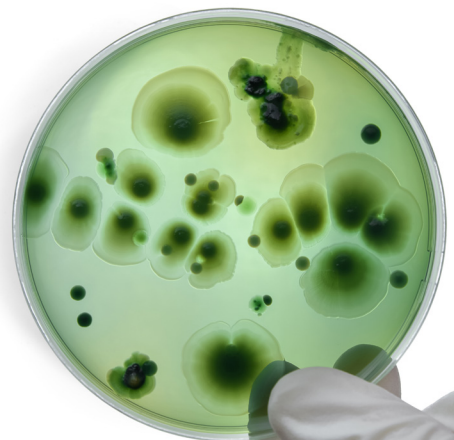
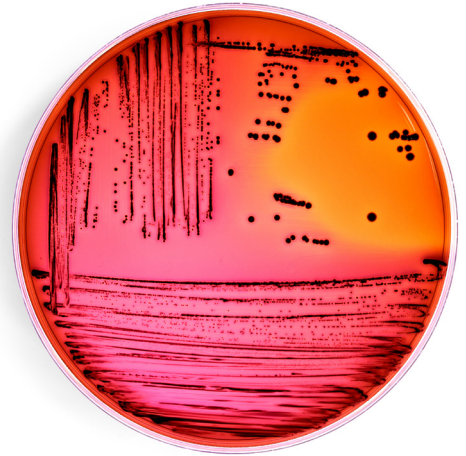
---

BIOPROCESS AND FERMENTATION

---

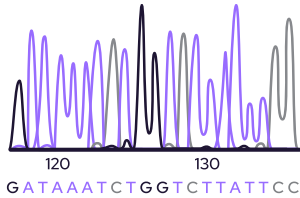
EDUCATION

---



# Biolog for Innovative Solutions

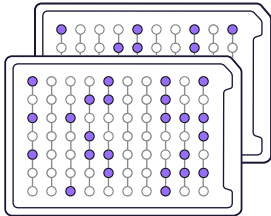
---



## LAB SERVICES

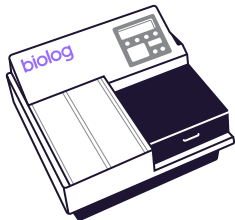
Whether you are concerned about contamination or enumeration, our polyphasic genotypic, proteotypic, and phenotypic testing services can help you reduce costs and guarantee brand safety.

Biolog Lab Services results are ISO 17025: 2017 accredited and validated. We are registered with the FDA, GDUFA, and cGMP-compliant.



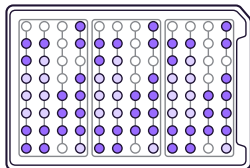
## PREPLATED OR CUSTOMIZED PHENOTYPE MICROARRAY PANELS

Use preplated or customized Phenotype MicroArray™ panels to test metabolic response to thousands of growth conditions and anti-microbial compounds. Interrogate microbial cells for sensitivity to salt, pH and chemical inhibitors, including antibiotics and heavy metals. Biolog also offers Phenotype MicroArrays for mammalian cell and mitochondrial analysis.



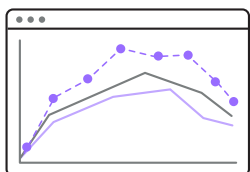
## THE MICROSTATION

The MicroStation™ is a specially-designed plate reader for identifying over 2,900 aerobes, anaerobes, yeast, and filamentous fungi with an experimental setup that takes less than one hour.



## THE ECOPLATE

The EcoPlate™ array effectively distinguishes spatial and temporal changes in the metabolism of microbial communities as a result of environmental changes.



## SOFTWARE SOLUTIONS

For characterizing cell phenotypes, powerful bioinformatics software analyzes kinetic data from thousands of conditions at once. Proven algorithms work in concert with comprehensive databases for rapid strain-level identification of microbes. Backed by security features to ensure data integrity, and provides automatic generation of audit trails.

INTRODUCING

# ODiN

The newest all-in-one solution for high-throughput microbial metabolic characterization, growth kinetics, and identification.



Characterize phenotypes by monitoring growth curves and cell metabolism kinetics for microbial or mammalian cells. Odin™ can classify up to 4,800 conditions unattended for over two days.

Identify unknown microbes from our databases of over 2,900 anaerobic and aerobic bacteria, yeast, and filamentous fungi.

With 50 positions flexible user control and data analysis capabilities, Odin is the indispensable tool for phenotype characterization.

# Biolog for You

Find out how at [biolog.com](http://biolog.com)

**biolog**

---

**BIOLOG INC.**

21124 Cabot Blvd.  
Hayward, CA 94545  
+1 800 284 4949

---

**SERVICES LAB**

125 Sandy Dr.  
Newark, DE 19713  
+1 302 737 4297